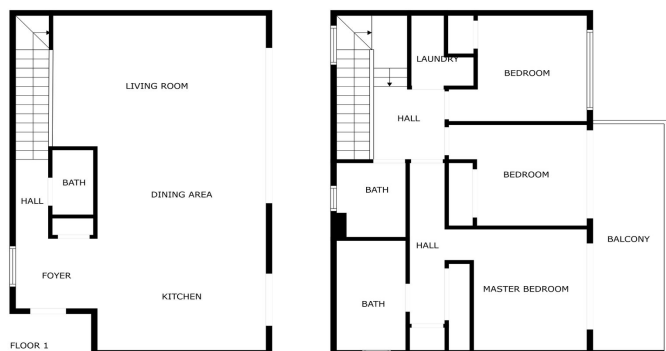




Townhouse for sale in El Chaparral, Mijas

640,000 €

Reference: R4934941 Bedrooms: 3 Bathrooms: 2 Plot Size: 100m² Build Size: 230m² Terrace: 116m²



SIZES ARE APPROXIMATE, ACTUAL MAY VARY.





Costa del Sol, El Chaparral

This bright and spacious two-story home offers everything you could wish for in a contemporary home. The bright first floor has a wonderfully designed open kitchen with an island that smoothly connects to the spacious living room. The large living room opens onto its own, large yard through glass sliding doors that are the width of the entire wall, bringing indoor and outdoor spaces perfectly together. There is also a toilet downstairs. Upstairs there are three spacious bedrooms, two of which have direct access to your own terrace. The master bedroom has its own bathroom, while the other two bedrooms share a shared bathroom. The apartment also has a utility room with a washing machine and dryer. The corner apartment has a smart system that you can conveniently control with your phone, adjusting e.g. the air conditioning to your own comfort even remotely. The easy maintenance of the yard is guaranteed with artificial grass and a spectacular tiled terrace, which makes the outdoor area perfect for relaxing and enjoying the sun. The apartment also includes its own parking space and storage, which increases living comfort. The Eden house community offers luxury services, such as its own tennis court, gym, sauna, steam room, lounges and outdoor swimming pool. In addition, you have a shared kitchen at your disposal, which makes organizing large events effortless. Your safety in the gated community is ensured by 24/7 security and a doorman, so you can enjoy life in peace. The area has comprehensive services, and the golf course is right next door. It's a short distance to the beach, and you can easily get to the airport in just 20 minutes. This terraced house is the perfect choice for those who enjoy modern comforts and peaceful living.



Features:

Features

Covered Terrace
Lift
Near Transport
Private Terrace
Storage Room
Ensuite Bathroom
Double Glazing
24 Hour Reception
Fitted Wardrobes
Solarium
Gym
Sauna
Paddle Tennis
Tennis Court
Utility Room

Views

Panoramic
Garden
Street

Pool

Communal
Private Pool

Garden

Communal
Private Garden

Utilities

Electricity
Telephone

Orientation

South

Setting

Close To Golf
Close To Sea
Close To Shops
Close To Town
Close To Schools
Close To Forest

Furniture

Not Furnished

Security

Gated Complex
24 Hour Security
Electric Blinds

Category

Luxury
Resale

Climate Control

Air Conditioning
Central Heating

Condition

Excellent

Kitchen

Fully Fitted

Parking

Underground
Private