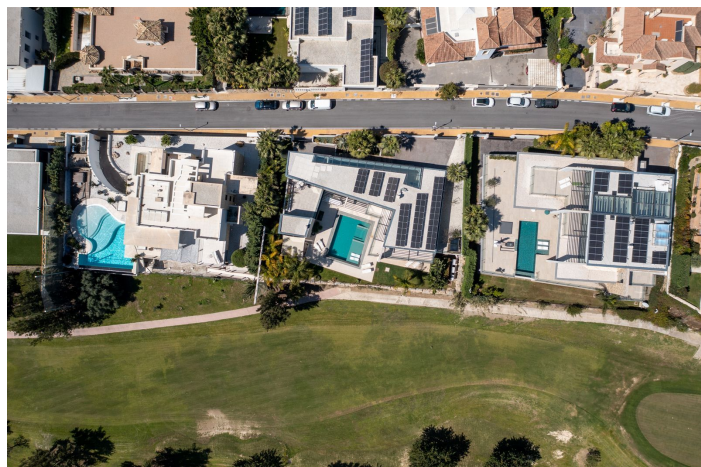




Detached Villa for sale in Benahavís, Benahavís

4,950,000 €

Reference: R5010199 Bedrooms: 5 Plot Size: 1,195m² Build Size: 407m² Terrace: 86m²





Costa del Sol, Benahavís

Newly built contemporary villa situated in the prestigious urbanization of La Alquería, Benahavís. Positioned frontline golf and facing east to south, the property offers panoramic views of the Mediterranean Sea, the coastline, and the iconic La Concha mountain. Set on a 1,195 m² plot, the villa has a total built area of 407 m², complemented by approximately 90 m² of both covered and open terraces. The residence features five bedrooms, each with en-suite bathrooms, and is designed to combine modern comfort with elegant style. The main floor includes an entrance hallway leading to a spacious living area with high ceilings and a fireplace. Adjacent is a dining area, also with a fireplace, and an open-plan, fully fitted kitchen equipped with Blum cabinetry and appliances by Miele and Bora. This level also includes a guest toilet, laundry area, and two guest bedrooms. Direct access from the main living areas leads to the terraces, landscaped garden, and a private 56 m² swimming pool. Upstairs, the master suite includes a dressing area and a versatile adjoining room, ideal for use as an office, gym, or additional bedroom. Two further guest bedrooms with en-suite bathrooms are also located on this level. All rooms on the upper floor open to terraces with uninterrupted views. A garage with space for one car is also included. One of the terraces provides access to the rooftop, where solar panels are installed. Additional features include an Airzone climate control system for individual room regulation, underfloor heating throughout, a domotic (home automation) system, and high-quality furnishings, which are included in the sale. Conveniently located just a short drive from the beach and all local amenities, as well as near renowned golf courses such as Atalaya and El Paraíso, offers a blend of luxury, comfort, and exceptional surroundings.



Features:

Features

Covered Terrace
Private Terrace
Storage Room
Ensuite Bathroom
Double Glazing
Fitted Wardrobes
Solarium
Utility Room
Barbeque

Views

Sea
Mountain
Panoramic
Pool
Golf
Ski

Pool

Private Pool

Garden

Private Garden

Category

Golf
Luxury
Resale

Orientation

South East

Setting

Close To Golf
Close To Town
Close To Schools
Frontline Golf

Furniture

Fully Furnished

Security

Alarm System

Climate Control

Air Conditioning
Fireplace
U/F Heating

Condition

Excellent

Kitchen

Fully Fitted

Parking

Garage