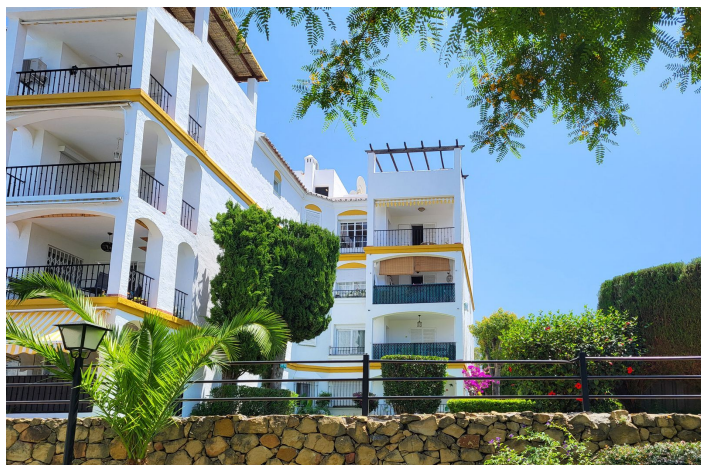




## Penthouse for sale in El Paraiso, Estepona

**330,000 €**

Reference: R5068357   Bedrooms: 2   Bathrooms: 2   Build Size: 110m<sup>2</sup>   Terrace: 44m<sup>2</sup>







---

## Costa del Sol, El Paraiso

Exceptional Penthouse Investment Opportunity – New Golden Mile, Estepona Located in the sought-after Atalaya del Golf complex on Estepona's New Golden Mile, this bright and spacious 2-bedroom, 2-bathroom penthouse offers a rare combination of stunning panoramic views, generous living space, and unbeatable convenience. Set in the highest position of the community, the apartment boasts spectacular sea views stretching to Gibraltar and Africa, with picturesque sights of La Concha and the Estepona mountains. It features east and west-facing aspects, flooding the interior with natural light throughout the day. Spacious living/dining area with terrace | Independent kitchen with breakfast area, plus laundry room and storage Expansive private solarium (37 m<sup>2</sup>) with breathtaking 360° views | Approx. 154 m<sup>2</sup> total built area (110 m<sup>2</sup> apartment + 7 m<sup>2</sup> terrace + 37 m<sup>2</sup> solarium) Covered parking included | Well-maintained communal gardens and large swimming pool | Recently renovated and repainted community, offering a fresh and modern exterior | The property is in excellent structural condition, requiring only internal modernisation to reach its full potential. It's located just a 5-minute walk from Diana Park Shopping Centre, which offers supermarkets, pharmacies, veterinary clinics, cafés, bookstores, and more. Perfectly situated between Marbella and Estepona, and close to San Pedro, Guadalmina, and El Paraíso, this is a prime opportunity for investors or homebuyers seeking a flexible residence with leaseback options (1 to 3 years available).



## Features:

### Features

Lift  
Private Terrace  
Storage Room

### Setting

Commercial Area  
Close To Golf  
Urbanisation  
Close To Sea  
Close To Shops  
Close To Schools

### Furniture

Fully Furnished

### Parking

Covered

### Orientation

East  
West

### Condition

Good

### Garden

Communal

### Category

Golf

### Views

Sea  
Mountain

### Pool

Communal

### Security

Gated Complex  
Entry Phone