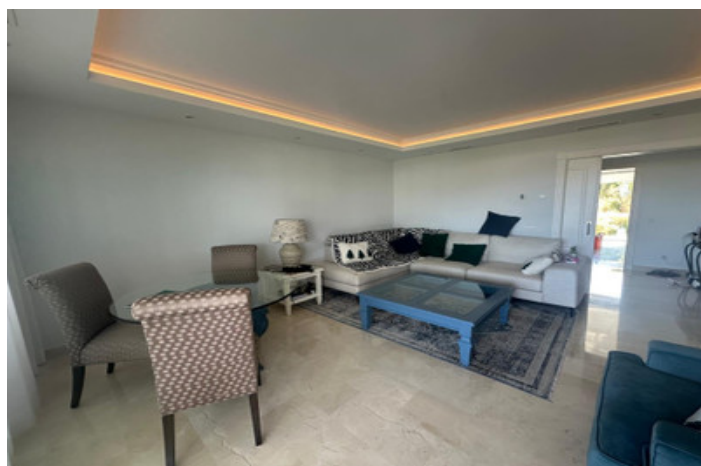




## Middle Floor Apartment for rent in Nueva Andalucía, Marbella

3,200 - 3,200 €

Reference: R5105194    Bedrooms: 2    Build Size: 127m<sup>2</sup>    Terrace: 41m<sup>2</sup>





---

## Costa del Sol, Nueva Andalucía

This outstanding luxury apartment is located in the prestigious La Corniche development in Nueva Andalucía, Marbella. Boasting the best location with panoramic views, the property offers a unique combination of elegance, comfort, and convenience. Set in the heart of the Nueva Andalucía golf valley, surrounded by top quality golf courses. The apartment features 2 spacious bedrooms, including a master suite with an en-suite bathroom, alongside a further bathroom and a guest toilet. The expansive built area of 127m<sup>2</sup> is complemented by a generous 41m<sup>2</sup> private terrace, perfect for enjoying the breathtaking sea, mountain, and golf views. The living spaces are thoughtfully designed, featuring a fully fitted and equipped kitchen, a dedicated dining room, a comfortable living room, and additional guest and laundry rooms. Fitted wardrobes, double glazing, electric blinds, and air conditioning ensure comfort and practicality throughout the year. Residents benefit from an array of luxury amenities, including a communal swimming pool, communal gardens, and a private garage. The gated community offers a high level of security with a doorman, security entrance, and 24-hour security service, providing peace of mind. Ideally situated mountainside, this apartment is close to the sea and beach, world-class golf courses, shops, Marbella and San Pedro town centres, Puerto Banus marina, and a wide range of restaurants. The combination of panoramic views, prime location, and comprehensive amenities makes this property a distinguished choice for a Marbella property.



## Features:

### Features

Covered Terrace  
Lift  
Near Transport  
Private Terrace  
Satellite TV  
Ensuite Bathroom  
Double Glazing  
Fitted Wardrobes  
Barbeque

### Views

Sea  
Mountain  
Panoramic  
Country  
Garden  
Golf

### Pool

Communal

### Security

Gated Complex  
24 Hour Security  
Electric Blinds

### Orientation

South East

### Setting

Close To Golf  
Close To Port  
Close To Sea  
Close To Shops  
Close To Town  
Close To Schools

### Kitchen

Partially Fitted

### Parking

Private

### Climate Control

Air Conditioning

### Condition

Good

### Garden

Communal

### Category

Luxury