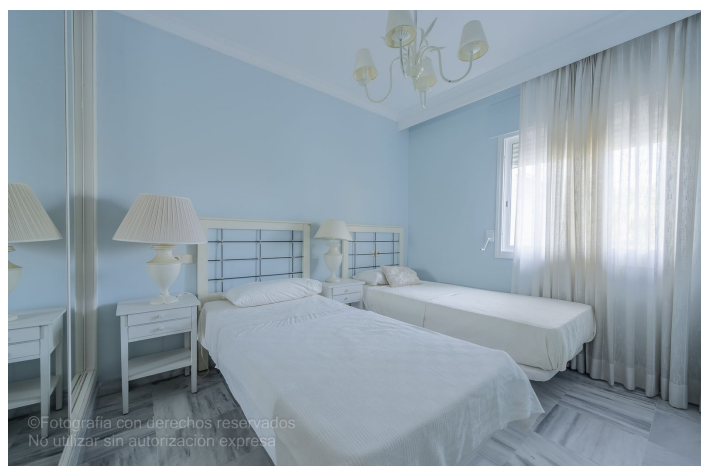




## Penthouse for sale in Puerto Banús, Marbella

525,000 €

Reference: R5131972 Bedrooms: 2 Bathrooms: 2 Build Size: 80m<sup>2</sup> Terrace: 70m<sup>2</sup>





---

## Costa del Sol, Puerto Banús

Bright two-bedroom, two-bathroom penthouse located in La Dama de Noche, one of the most exclusive and sought-after residential complexes in the area. Just one kilometre from the beach and Puerto Banús, it offers the tranquillity of a residential setting along with the convenience of having all services close at hand. Situated on the fourth floor with lift access, it features 81 m<sup>2</sup> of interior space laid out in a practical and functional way, along with an impressive 77 m<sup>2</sup> southeast-facing terrace, perfect for enjoying the sun, relaxing outdoors, or spending time with family and friends, all while taking in the pleasant open mountain views. Inside, the marble floors and bathrooms, generous fitted wardrobes, and a spacious, bright living room create a warm and comfortable atmosphere for everyday living. The property includes a parking space and is set within a community offering two swimming pools, extensive landscaped gardens, a children's play area, 24-hour security, and concierge service. Its location provides excellent connections to Marbella, San Pedro, and Nueva Andalucía, and is surrounded by shops, restaurants, and sports facilities, making it an ideal choice both as a permanent residence or an investment., Marbella, Costa del Sol. Built 0 m<sup>2</sup>. Setting : Commercial Area, Close To Golf, Close To Port, Close To Shops, Close To Sea, Close To Schools, Marina, Close To Marina, Urbanisation. Orientation : East. Condition : Good. Pool : Communal. Views : Mountain, Panoramic. Features : Lift, Fitted Wardrobes, Near Transport, Private Terrace, Paddle Tennis, Tennis Court, Ensuite Bathroom, Marble Flooring, Restaurant On Site, Near Church. Furniture : Optional. Kitchen : Partially Fitted. Garden : Communal. Security : Gated Complex, Entry Phone, 24 Hour Security. Parking : Underground, Private. Category : Resale.



## Features:

### Features

Lift  
Near Transport  
Private Terrace  
Ensuite Bathroom  
Marble Flooring  
Fitted Wardrobes  
Paddle Tennis  
Tennis Court  
Restaurant On Site  
Near Church

### Setting

Commercial Area  
Close To Port  
Urbanisation  
Close To Sea  
Close To Shops  
Close To Schools  
Marina  
Close To Marina

### Furniture

Optional

### Security

Gated Complex  
24 Hour Security  
Entry Phone

### Orientation

East

### Condition

Good

### Kitchen

Partially Fitted

### Parking

Underground  
Private

### Views

Mountain  
Panoramic

### Pool

Communal

### Garden

Communal

### Category

Resale