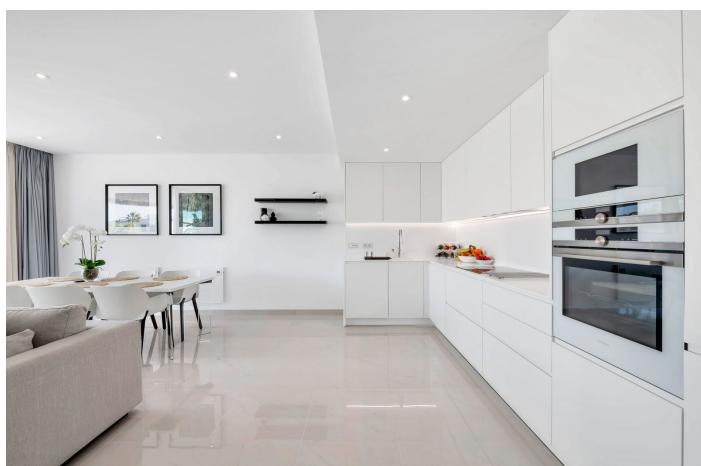




Middle Floor Apartment for sale in Estepona, Estepona

825.000 €

Referenz: R5139946 Schlafzimmer: 2 Badezimmer: 2 Garten: 91m² Terrasse: 81m²





Costa del Sol, Estepona

Located in the sought-after Cataleya Phase 2, this rare 2-bedroom first-floor apartment combines modern luxury, expansive outdoor living, and a prime Costa del Sol address. With only three apartments of this layout in the entire development, it offers unmatched exclusivity. With 91 m² of elegant interior space and an impressive 81 m² terrace, this home is designed for the Mediterranean lifestyle. The spacious open-plan kitchen and living area connect seamlessly to the expansive terrace through floor-to-ceiling sliding glass doors, creating a light-filled environment perfect for both entertaining and relaxation. This apartment is being sold fully furnished with high-end designer furniture, allowing you to move in and enjoy a turnkey luxury home from day one. The master suite features an en-suite bathroom, built-in wardrobes, and direct access to the terrace. The second double bedroom also opens onto the terrace, ensuring natural light and privacy throughout.

Exclusive Features & Amenities

- 91 m² of beautifully designed interior space
- 81 m² private terrace with space for dining & lounging
- Sold fully furnished with luxury designer furniture
- Modern open-plan kitchen with premium appliances
- Master suite with en-suite bathroom & terrace access
- Additional double bedroom with terrace access
- Gated community with 24h security
- Heated pool & 450 m² saltwater outdoor pool
- Underground parking & private storage room

Prime Location Between Marbella & Estepona Set within a secure, low-density development with lush gardens and resort-style facilities, Cataleya Phase 2 enjoys a privileged location: Estepona / San Pedro border – peaceful yet connected Walking distance to Atalaya Golf Club Just 2 km from the beach 17 minutes to Marbella & 17 minutes to Estepona 45 minutes to Málaga Airport



Eigenschaften:

Merkmale

Überdachte Terrasse
Aufzug
Private Terrasse
Lagerraum
Badezimmer
Doppelverglasung
Einstellungsschränke

Ansichten

Berg
Panorama

Pool

Gemeinschaft
Erhitzt
Innenräume

Garten

Gemeinschaft
Angelegt

Versorgungsunternehmen

Strom

Orientierung

Südwesten

Einstellung

Urbanisierung
In der Nähe von Schulen

Möbel

Voll eingerichtet

Sicherheit

Gated Complex
24 -Stunden -Sicherheit
Alarmanlage
Eingabetelefon

Kategorie

Golf
Luxus

Klimakontrolle

Klimaanlage
Kalte a/c
Heiße A/C.

Zustand

Exzellent

Küche

Voll ausgestattet

Parken

Unterirdisch
Garage
Privat
Bedeckt
Gemeinschaft