



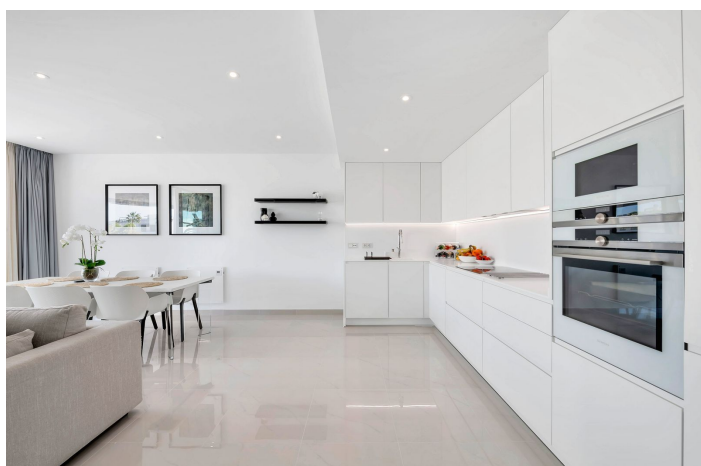
Middle Floor Apartment for sale in Estepona, Estepona

825 000 €

ванная комната:

Ссылка: R5139946 спальни: 2 2

Размер сборки: 91m² терраса: 81m²





Costa del Sol, Estepona

Located in the sought-after Cataleya Phase 2, this rare 2-bedroom first-floor apartment combines modern luxury, expansive outdoor living, and a prime Costa del Sol address. With only three apartments of this layout in the entire development, it offers unmatched exclusivity. With 91 m² of elegant interior space and an impressive 81 m² terrace, this home is designed for the Mediterranean lifestyle. The spacious open-plan kitchen and living area connect seamlessly to the expansive terrace through floor-to-ceiling sliding glass doors, creating a light-filled environment perfect for both entertaining and relaxation. This apartment is being sold fully furnished with high-end designer furniture, allowing you to move in and enjoy a turnkey luxury home from day one. The master suite features an en-suite bathroom, built-in wardrobes, and direct access to the terrace. The second double bedroom also opens onto the terrace, ensuring natural light and privacy throughout.

Exclusive Features & Amenities

- 91 m² of beautifully designed interior space
- 81 m² private terrace with space for dining & lounging
- Sold fully furnished with luxury designer furniture
- Modern open-plan kitchen with premium appliances
- Master suite with en-suite bathroom & terrace access
- Additional double bedroom with terrace access
- Gated community with 24h security
- Heated pool & 450 m² saltwater outdoor pool
- Underground parking & private storage room

Prime Location Between Marbella & Estepona Set within a secure, low-density development with lush gardens and resort-style facilities, Cataleya Phase 2 enjoys a privileged location: Estepona / San Pedro border – peaceful yet connected Walking distance to Atalaya Golf Club Just 2 km from the beach 17 minutes to Marbella & 17 minutes to Estepona 45 minutes to Málaga Airport



Характеристики:

Функции

Покрытая терраса
Поднимать
Частная терраса
Хранилище
Ванная комната
Двойное остекление
Приспособленные шкафы

Виды

Гора
Панорамный

Бассейн

Коммунальный
Нагретый

В помещении

Сад

Коммунальный
Ландшафт

Коммунальные услуги

Электричество

Ориентация

Юго -запад

Параметр

Урбанизация
Рядом с школами

Мебель

Полностью меблирован

Безопасность

Закрытый комплекс
24 -часовая безопасность
Система тревоги
Входчик телефона

Категория

Гольф
Роскошь

Климат -контроль

Кондиционер
Холодный А/С
Горячий кондиционер

Состояние

Отличный

Кухня

Полностью оснащен

Стоянка

Подполье
Гараж
Частный
Покрытый
Коммунальный