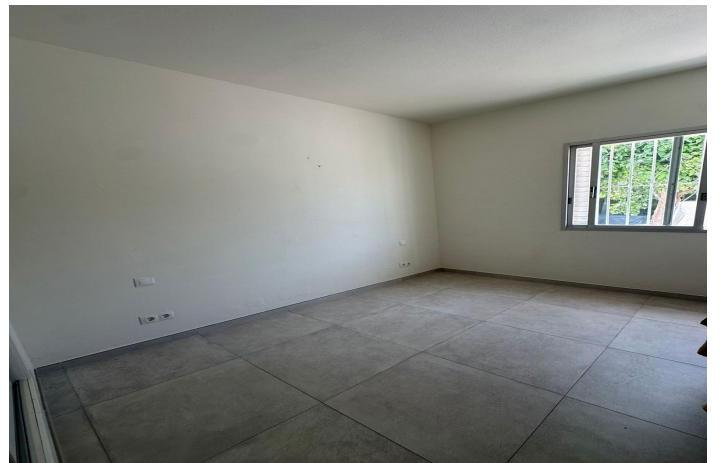




Ground Floor Apartment for sale in Marbella, Marbella

590,000 €

Reference: R5141662 Bedrooms: 2 Bathrooms: 2 Build Size: 109m² Terrace: 30m²





Costa del Sol, Nueva Andalucía

Stunning Ground Floor Apartment in Nueva Andalucía's Prestigious Aloha Golf Valley Discover your dream home in the heart of Marbella's exclusive Nueva Andalucía Golf Valley! This beautiful 109 m² ground floor apartment in the sought-after Aloha area offers a perfect blend of luxury, comfort, and convenience. With breathtaking views of La Concha beach and lush gardens, this property is a rare gem for those seeking an elevated lifestyle. Property Highlights: Spacious & Modern Layout: 2 bedrooms, 2 bathrooms, a fully equipped kitchen, and a dedicated laundry room—all on one floor for seamless living. Private Garden: Enjoy your own outdoor oasis with stunning views of La Concha mountain and the sea. Accessibility: No stairs, ensuring easy access for all. Private Parking: Exclusive parking within the secure urbanisation. Premium Community Amenities: Relax or stay active with access to a swimming pool, tennis courts, paddle tennis court, and a state-of-the-art gym. Why Choose Aloha? Nestled in the prestigious Aloha Golf Valley, this location combines tranquillity with vibrant sophistication. Just minutes from Puerto Banús, you'll enjoy: World-class golf at Aloha Golf Club, Las Brisas, and Los Naranjos. A lively social scene with high-end restaurants, chic cafés, boutiques, and exclusive clubs. Proximity to international schools and top-tier sports facilities, perfect for families. Unrivalled views of the sea and La Concha mountain, blending luxury with natural beauty Whether you're seeking a serene retreat, a family-friendly home, or a smart investment, this apartment in Aloha offers it all. Don't miss the chance to own a slice of Marbella's finest lifestyle! Contact us today to schedule a viewing and make this stunning apartment yours!



Features:

Features

Near Transport
Private Terrace
Ensuite Bathroom
Marble Flooring
Double Glazing
Fitted Wardrobes
Gym
Paddle Tennis
Tennis Court
Utility Room
Fiber Optic
Access for people with reduced mobility

Views

Mountain
Garden

Pool

Communal

Garden

Communal
Private Garden
Landscaped

Category

Holiday Homes
Investment
Golf

Orientation

East

Setting

Close To Golf
Urbanisation
Close To Sea
Close To Shops
Close To Schools
Town

Furniture

Not Furnished

Security

Gated Complex
24 Hour Security
Alarm System
Entry Phone

Climate Control

Fireplace

Condition

Good

Kitchen

Fully Fitted

Parking

Private
Covered