



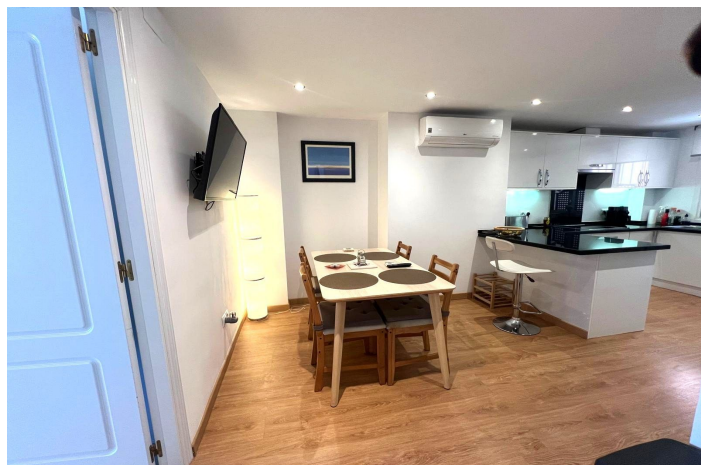
Penthouse Duplex for sale in Atalaya, Estepona

359 000 €

ванная комната:

Ссылка: R5142781 спальни: 2 2

Размер сборки: 119m² терраса: 39m²





Costa del Sol, Atalaya

Fully Renovated Duplex Penthouse with Enclosed Terrace & Private Parking Experience comfort and exclusivity in this fully renovated duplex penthouse, where the owners have added numerous extras and dedicated exceptional attention to detail, creating a truly unique home. Located in a private residential complex with communal swimming pool, just a short walk from the nearest beach, close to shops, public transport, and amenities, and only 10 minutes by car from Estepona, Puerto Banús, and Marbella. Two international airports are just 1 hour away, making it an ideal choice for a permanent residence or a smart investment. Key Features: ✓ West-facing: Enjoy natural light and stunning sunsets. ✓ Enclosed terrace, perfect for year-round use. ✓ Private top terrace, with stunning roof top and mountain views, perfect for relaxing and watching the sunset with a drink. ✓ Complete soundproofing and triple-glazed windows for maximum privacy and comfort. ✓ High-security entrance door for peace of mind. ✓ Air conditioning and a decorative fireplace for all-season comfort. ✓ Two-level layout with potential to add a third bedroom. ✓ Private underground parking with direct lift access from the garage. ✓ Premium finishes and exclusive extras, reflecting the owners' dedication and attention to detail. Prime Location: Walking distance to the beach, shops, transport, and restaurants, with quick access to main roads connecting Marbella, Estepona, and Málaga. A truly exceptional property designed for those who value space, natural light, privacy, and the details that make a difference.



Характеристики:

Функции

Покрытая терраса
Поднимать
Рядом с транспортом
Частная терраса
Ванная комната
Мраморные полы
Двойное остекление
Приспособленные шкафы

Виды

Гора
Сад

Бассейн

Коммунальный

Сад

Коммунальный

Коммунальные услуги

Электричество
Питьевая вода

CO2 Рейтинг выбросов

E

Ориентация

Западный

Параметр

Рядом с гольфом
Урбанизация
Рядом с магазинами
Рядом с школами

Мебель

Необязательный

Безопасность

Закрытый комплекс

Категория

Праздничные дома
Инвестиции
Гольф
Перепродажа

Климат -контроль

Кондиционер
Камин

Состояние

Отличный
Недавно отремонтирован

Кухня

Полностью оснащен

Стоянка

Подполье

Энергетический рейтинг

E