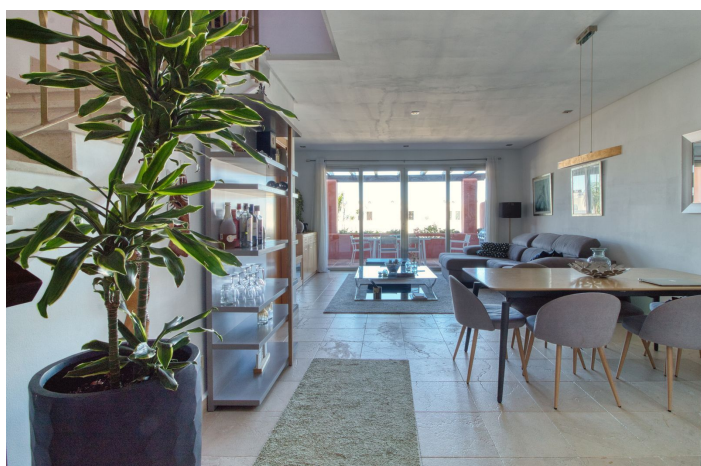
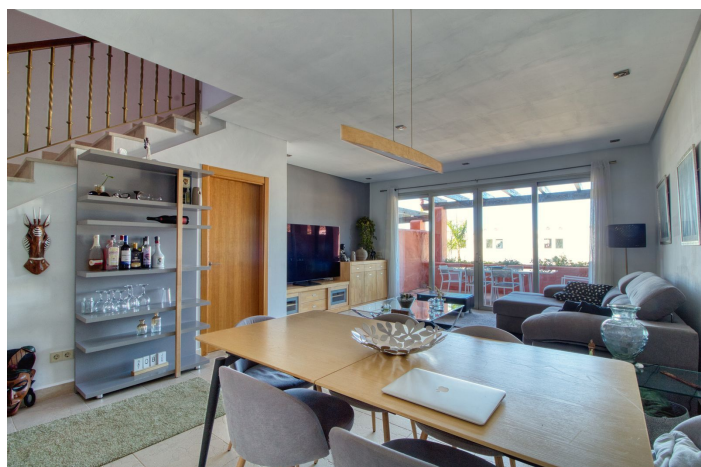
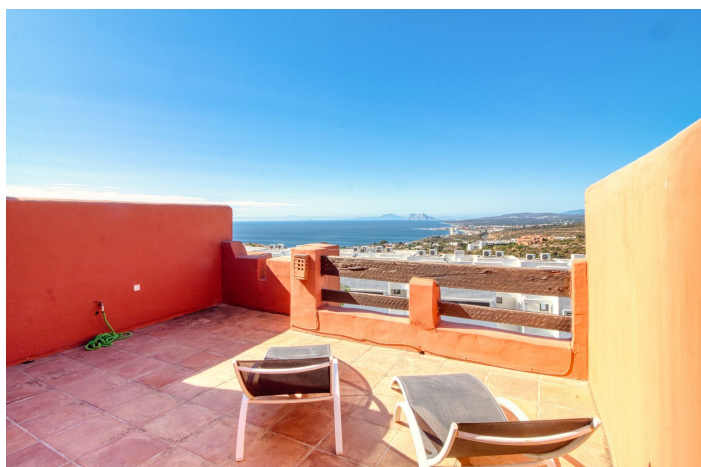




Townhouse for sale in Manilva, Manilva

415,000 €

Reference: R5147173 Bedrooms: 3 Build Size: 213m² Terrace: 83m²





Costa del Sol, Manilva

Fantastic townhouse in Bahía de las Rocas! This spacious property combines comfort, style, and breathtaking scenery, offering spectacular views of Gibraltar and the African coast from its rooftop terrace. Spread across three floors, it provides generous living space and a thoughtful layout ideal for both relaxation and entertaining. On the ground floor, you will find a bright living and dining area, a fully equipped kitchen, and a guest toilet. A large terrace extends from the living space, perfect for enjoying the Mediterranean breeze. The first floor features two generously sized bedrooms, each with its own ensuite bathroom and one with private balcony. The lower level adds versatility, currently used as a third bedroom, and also includes a separate laundry room for extra convenience. Crowning the home is an impressive 60 m² rooftop terrace, where you can soak up the sun and enjoy panoramic views throughout the day. A private parking space directly in front of the house provides maximum convenience. The property is set within a beautifully designed complex by renowned architect Melvin Villarroel, surrounded by lush tropical gardens and offering access to three communal swimming pools, one of which is open year-round. Its location is unbeatable—just minutes from the lively marinas of La Duquesa and Sotogrande, with their fantastic restaurants, bars, and amenities. Several top golf courses are also only 10–15 minutes away, making this an excellent choice for golf enthusiasts. Whether you are seeking a family home, a holiday retreat, or a sound investment, this property truly delivers on all fronts. Do not miss the opportunity—contact us today to arrange a viewing!



Features:

Features

Covered Terrace
Private Terrace
Storage Room
Ensuite Bathroom
Marble Flooring
Double Glazing
Fitted Wardrobes
Solarium
Utility Room
Basement
Fiber Optic

Views

Sea
Mountain
Panoramic
Garden
Port

Pool

Communal

Security

Gated Complex
Entry Phone
Safe

Category

Holiday Homes
Investment
Golf
Resale

Orientation

South West

Setting

Urbanisation
Close To Shops
Close To Town
Close To Schools

Kitchen

Fully Fitted

Parking

Private

Climate Control

Air Conditioning
Cold A/C
Hot A/C

Condition

Good

Garden

Communal

Utilities

Electricity
Drinkable Water