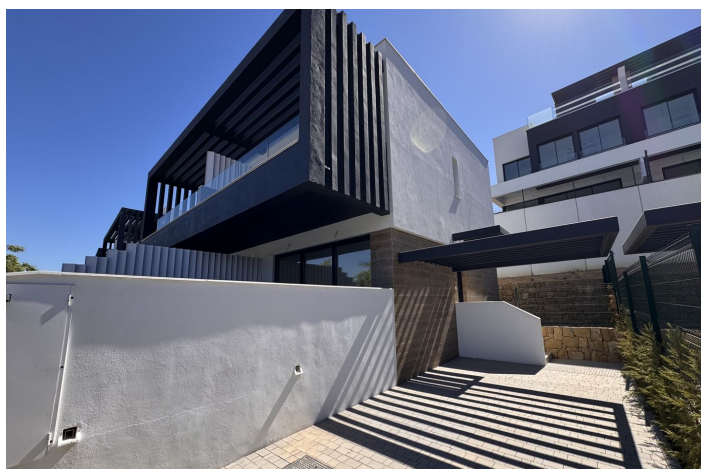




## Semi-Detached House for rent in Atalaya, Estepona

5,000 - 5,000 €

Reference: R5152657 Bedrooms: 3 Bathrooms: 3 Plot Size: 208m<sup>2</sup> Build Size: 123m<sup>2</sup> Terrace: 112m<sup>2</sup>





---

## Costa del Sol, Atalaya

Semi-Detached House, Atalaya, Costa del Sol. 3 Bedrooms, 3 Bathrooms, Built 0 m<sup>2</sup>. Setting : Frontline Golf, Town, Village, Close To Golf, Close To Shops, Close To Sea, Close To Town, Close To Schools, Close To Forest, Urbanisation. Orientation : West. Condition : Excellent, New Construction. Pool : Communal. Climate Control : Air Conditioning, Hot A/C, Cold A/C, Central Heating. Views : Mountain, Country, Courtyard, Forest. Features : Covered Terrace, Fitted Wardrobes, Near Transport, Private Terrace, Double Glazing, Fiber Optic. Furniture : Optional. Kitchen : Fully Fitted. Garden : Private. Security : Electric Blinds, Entry Phone, Alarm System. Parking : Garage, Private. Utilities : Electricity, Drinkable Water. Category : Luxury.



## Features:

### Features

Covered Terrace  
Near Transport  
Private Terrace  
Double Glazing  
Fitted Wardrobes  
Fiber Optic

### Views

Mountain  
Country  
Courtyard  
Forest

### Pool

Communal

### Garden

Private Garden

### Utilities

Electricity  
Drinkable Water

### Orientation

West

### Setting

Close To Golf  
Urbanisation  
Close To Sea  
Close To Shops  
Close To Town  
Close To Schools  
Frontline Golf  
Town  
Village  
Close To Forest

### Furniture

Optional

### Security

Alarm System  
Electric Blinds  
Entry Phone

### Category

Luxury

### Climate Control

Air Conditioning  
Cold A/C  
Hot A/C  
Central Heating

### Condition

Excellent  
New Construction

### Kitchen

Fully Fitted

### Parking

Garage  
Private