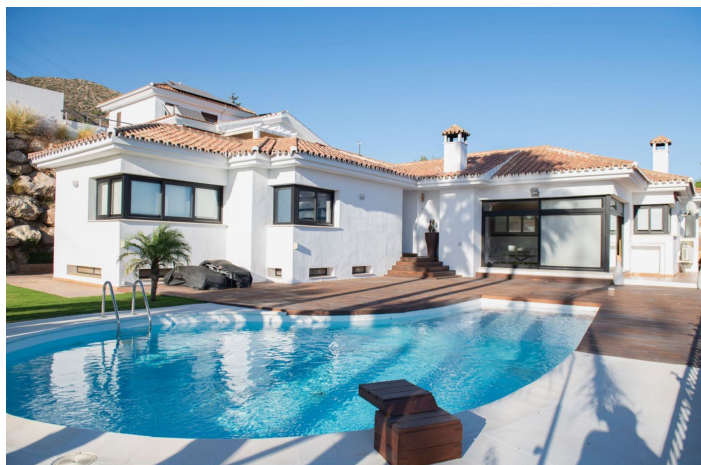




Detached Villa for sale in Benalmádena, Benalmádena

1,840,000 €

Reference: R5160391 Bedrooms: 4 Bathrooms: 4 Plot Size: 847m² Build Size: 294m²





Costa del Sol, Benalmádena

Discover this spectacular Villa with SEA views and unique design in one of the most exclusive areas of the Costa del Sol, Higueron, Benalmadena! Ideal property for families looking for space, comfort, sustainability, in a quiet and safe area within reach of all services, close to the beach and with quick connection to the motorway. Only 15 minutes drive to Malaga airport, 25 minutes to Malaga, 26 minutes to Marbella. It has an area of 847m2 plot and multiple spaces of enjoyment, 294 m built, with a modern design and high quality materials. Located in a quiet environment, with sea views, south facing. This distribution of the villa is following : - on a main floor there is a large living room with a fire place, kitchen with high-end appliances, 3 bedrooms and 2 bathrooms and storage and utility room - downstairs in a basement there is another large living room with a gym, 1 bedroom and bathroom + storage room. There is also a pre-installation for an extra kitchen if needed. Outside, private swimming pool with spectacular views of the bay of Fuengirola, large terrace with garden usable all year round, chill-out area, barbecue area, equipped with outdoor toilet. Outdoor garage has a capacity for three vehicles. As for equipment, it has air conditioning in every room and pre - installation for solar panels. An aerothermal system is used in order to lower to costs of the energy. There is a large water tank in order to collect water.



Features:

Features

Near Transport
Private Terrace
Satellite TV
Storage Room
Ensuite Bathroom
Fitted Wardrobes
WiFi
Games Room
Guest Apartment
Staff Accommodation
Basement

Views

Sea
Mountain
Garden
Pool
Urban

Pool

Private Pool

Security

Gated Complex
24 Hour Security
Electric Blinds

Category

Luxury
Resale

Orientation

South
South West

Setting

Close To Golf
Urbanisation
Close To Sea
Close To Shops
Close To Town
Close To Schools
Close To Forest
Close To Marina

Furniture

Fully Furnished

Parking

Garage
Private

Climate Control

Air Conditioning
Cold A/C
Hot A/C
Fireplace

Condition

Excellent

Kitchen

Fully Fitted

Utilities

Electricity
Drinkable Water