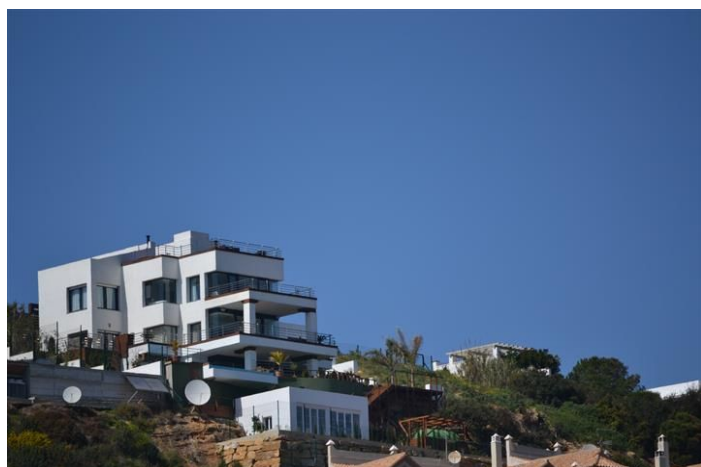




## Detached Villa for sale in La Duquesa, Manilva

**3,300,000 €**

Reference: R2216252   Bedrooms: 5   Bathrooms: 5   Plot Size: 1,200m<sup>2</sup>   Build Size: 750m<sup>2</sup>   Terrace: 200m<sup>2</sup>





---

## Costa del Sol, La Duquesa

Perched above the beaches of Casares, Manilva, and Sotogrande, this exceptional villa offers uninterrupted panoramic views stretching from Gibraltar to Marbella. Every corner of the property has been designed to bring Mediterranean light and the deep blue horizon into your daily life. Spread across four levels and crafted by one of the coast's most acclaimed architects, this residence combines contemporary architecture with the highest quality finishes. Its elegant, flowing design integrates spacious, luminous areas created for ultimate comfort and refined living. The interior is a showcase of luxury: underfloor heating throughout, a private elevator, intelligent home automation, and exquisite details that make every room a masterpiece. Entertainment spaces include a fabulous bar area, indoor barbecue, fully equipped gym, large cinema room, professional snooker room, sauna, jacuzzi, and a stunning rooftop bar perfect for breathtaking sunsets. Outside, the villa continues to impress with an infinity pool that seems to blend into the sea, expansive terraces, and landscaped gardens designed for relaxation and outdoor living. Additional features include independent guest accommodations, a four-car garage, security shutters, and automated gates. This property is not just a home—it is a statement of lifestyle. Designed for those who seek the extraordinary, it seamlessly combines exclusivity and luxury with the natural beauty of the Costa del Sol.



## Features:

### Features

Covered Terrace  
Lift  
Private Terrace  
Satellite TV  
Storage Room  
Ensuite Bathroom  
Marble Flooring  
Double Glazing  
Fitted Wardrobes  
Solarium  
WiFi  
Gym  
Games Room  
Utility Room  
Wood Flooring  
Jacuzzi  
Bar  
Barbeque  
Domotics

Access for people with reduced mobility

### Views

Sea  
Mountain  
Panoramic  
Country  
Garden  
Pool  
Beach  
Port

### Pool

Private Pool

### Garden

Private Garden  
Easy Maintenance

### Utilities

Electricity  
Drinkable Water  
Telephone

### Orientation

South East

### Setting

Close To Golf  
Close To Port  
Urbanisation  
Close To Sea  
Close To Town  
Close To Schools  
Close To Marina

### Furniture

Optional

### Security

Gated Complex  
Alarm System  
Electric Blinds  
Entry Phone  
Safe

### Category

Resale

### Climate Control

Air Conditioning  
Central Heating  
U/F Heating

### Condition

Excellent

### Kitchen

Fully Fitted

### Parking

Garage  
Private  
More Than One