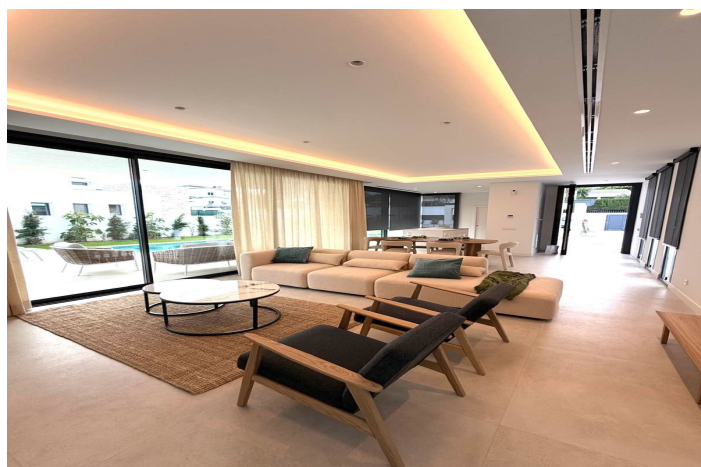




Detached Villa for sale in Atalaya, Estepona

2,000,000 €

Reference: R5172730 Bedrooms: 5 Bathrooms: 6 Plot Size: 645m² Build Size: 302m² Terrace: 85m²





Costa del Sol, Atalaya

Discover the epitome of luxury living with this brand new villa situated in the prestigious Montebiarritz Atalaya. Ideally located just 10 minutes from the vibrant Puerto Banus and in close proximity to top private schools and essential amenities, this property offers both convenience and elegance. ***Property Features:** - ***Ground Floor*:** Experience an open and airy living space where the integrated kitchen seamlessly flows into the dining and living areas. This inviting space grants direct access to a charming porch and a stunning pool. Additionally, you will find a well-appointed bedroom complete with an en-suite bathroom, along with a convenient guest toilet. - ***Second Floor*:** This level is dedicated to ultimate comfort, featuring a luxurious master bedroom that boasts its own private pool and a spacious walk-in closet. An additional bedroom with an en-suite bathroom ensures ample accommodation for family or guests. - ***Underground Level*:** Embrace entertainment and relaxation in this expansive area, which includes two bedrooms, each with their own en-suite bathrooms. Enjoy quality time in the second living room, unwind in the cinema room, rejuvenate in the spa, or manage household tasks effortlessly in the laundry room. This exquisite villa harmoniously blends modern design with functional living spaces, making it the perfect sanctuary for those seeking a refined lifestyle in a sought-after location.



Features:

Features

Covered Terrace
Private Terrace
Storage Room
Ensuite Bathroom
Double Glazing
Fitted Wardrobes
Solarium
Guest Apartment
Utility Room
Barbeque
Domotics
Staff Accommodation
Basement
Access for people with reduced mobility

Views

Mountain
Garden
Forest

Pool

Private Pool

Garden

Private Garden
Easy Maintenance

Utilities

Electricity
Drinkable Water
Telephone
Photovoltaic solar panels

Orientation

South

Setting

Close To Golf
Urbanisation
Close To Shops
Close To Town
Close To Schools
Mountain Pueblo
Close To Forest

Furniture

Not Furnished

Security

Alarm System
Electric Blinds
Entry Phone
Safe

Category

Holiday Homes
Investment
Luxury
Resale
Contemporary

Climate Control

Air Conditioning
Cold A/C
Hot A/C
Central Heating
U/F Heating
U/F/H Bathrooms

Condition

New Construction

Kitchen

Fully Fitted

Parking

Covered