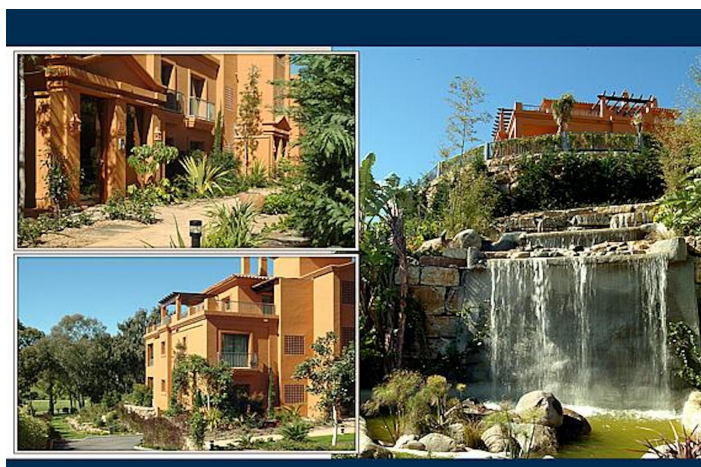




## Ground Floor Apartment for sale in Atalaya, Estepona

**449,000 €**

Reference: R5173609   Bedrooms: 2   Bathrooms: 2   Plot Size: 30m<sup>2</sup>   Build Size: 99m<sup>2</sup>   Terrace: 25m<sup>2</sup>





---

## Costa del Sol, Atalaya

Discover the elegance and tranquility of Benatalaya, an exclusive development located on the Atalaya , Estepona. Surrounded by golf courses and nature, this prestigious gated community offers a unique lifestyle, combining security, comfort, and a privileged setting. The homes at Benatalaya stand out for their modern design with Mediterranean touches, spacious terraces with panoramic views of the sea, golf courses, and mountains, bright interiors with high-quality finishes, fully equipped kitchens, and open spaces designed for maximum comfort. Among its amenities, residents can enjoy extensive tropical gardens, several outdoor pools, a fully equipped spa with a heated indoor pool, gym, and sauna, ideal for relaxing year-round. Thanks to its strategic location, Benatalaya is just minutes from the beach and the charming center of Estepona, and a short distance from Marbella, Puerto Banús, and the best leisure and dining areas on the Costa del Sol. Benatalaya is the perfect combination of exclusivity, well-being, and connection with nature. Ground Floor Apartment, Atalaya, Costa del Sol. 2 Bedrooms, 2 Bathrooms, Built 99 m<sup>2</sup>, Terrace 25 m<sup>2</sup>, Garden/Plot 30 m<sup>2</sup>. Setting : Frontline Golf, Close To Schools, Urbanisation. Orientation : South West. Condition : Excellent. Pool : Communal, Heated. Climate Control : Air Conditioning, U/F Heating. Views : Mountain. Features : Covered Terrace, Private Terrace, Gym, Utility Room, Marble Flooring, 24 Hour Reception. Furniture : Fully Furnished. Kitchen : Fully Fitted. Garden : Private. Security : 24 Hour Security. Parking : Underground, Private. Category : Golf, Holiday Homes.



## Features:

### Features

Covered Terrace  
Private Terrace  
Marble Flooring  
24 Hour Reception  
Gym  
Utility Room

### Views

Mountain

### Pool

Communal  
Heated

### Garden

Private Garden

### Category

Holiday Homes  
Golf

### Orientation

South West

### Setting

Urbanisation  
Close To Schools  
Frontline Golf

### Furniture

Fully Furnished

### Security

24 Hour Security

### Climate Control

Air Conditioning  
U/F Heating

### Condition

Excellent

### Kitchen

Fully Fitted

### Parking

Underground  
Private