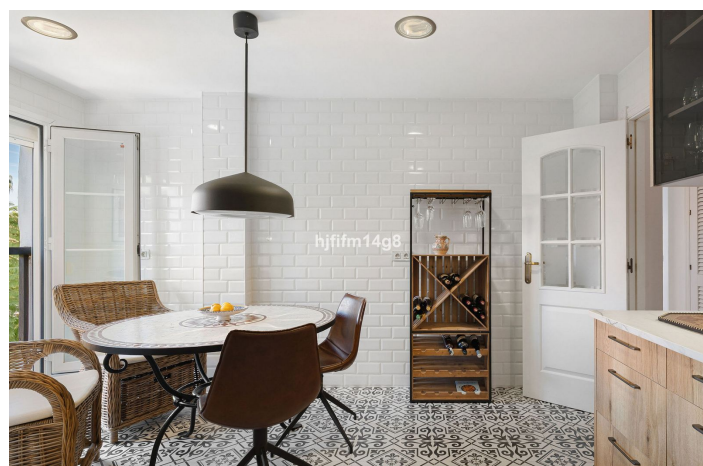




## Middle Floor Apartment for sale in San Pedro de Alcántara, Marbella

825,000 €

Reference: R5222434    Bedrooms: 2    Bathrooms: 2    Build Size: 125m<sup>2</sup>





---

## Costa del Sol, San Pedro de Alcántara

Location, location, location! Look no further — the sought-after Las Adelfas complex is one of the most desirable communities in the area, and we're delighted to present this charming 2-bedroom apartment perfectly positioned within the urbanisation. Partly renovated, this home beautifully combines modern comfort with authentic Andalusian style, staying true to the charm that makes Las Adelfas so special. Step into a welcoming entrance hall that leads to the spacious living room, featuring a cassette fireplace — perfect for cozy winter evenings. From here, large sliding doors open onto a private, L-shaped covered terrace. Thanks to its corner position, the terrace enjoys excellent privacy and offers two distinct areas — one for relaxing and another perfect for alfresco dining. The kitchen is generously sized and includes a dining area plus a separate utility/storage room with a washing machine and dryer — a great space for those who love cooking and entertaining. Further inside, you'll find two bedrooms. The guest bedroom sits opposite a full bathroom, which also serves conveniently as a guest WC. The master bedroom is especially spacious, currently featuring a sofa bed and a large en-suite bathroom with both a walk-in shower and bathtub, plus a window for natural light and ventilation. From the master suite, you also have direct access to the terrace, creating a lovely indoor-outdoor connection. Additional highlights include: - New air-conditioning system, installed two years ago - Underground parking for one car - Private storage room, ideal for golf clubs, bicycles, or beach gear This delightful property offers comfort, character, and an unbeatable location — a rare opportunity to own a home in one of the most popular complexes in the area.



## Features:

### Features

Covered Terrace  
Lift  
Near Transport  
Private Terrace  
Storage Room  
Marble Flooring  
Fitted Wardrobes  
Utility Room

### Setting

Beachside  
Close To Golf  
Close To Port  
Close To Sea  
Close To Shops  
Close To Schools

### Garden

Communal

### Climate Control

Air Conditioning  
Fireplace

### Pool

Communal

### Security

Gated Complex  
Alarm System

### Views

Mountain  
Garden  
Pool

### Kitchen

Partially Fitted

### Parking

Communal