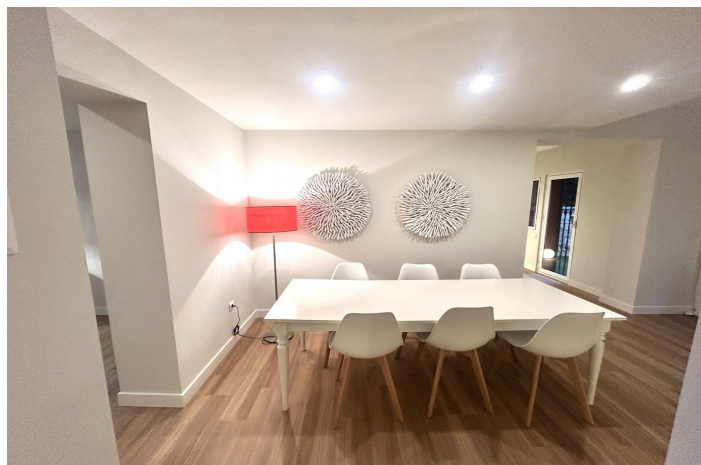




## Semi-Detached House for sale in Atalaya, Estepona

**690.000 €**

Referenz: R5251573    Schlafzimmer: 4    Badezimmer: 3    Grundstücksgröße: 250m<sup>2</sup>    Garten: 285m<sup>2</sup>    Terrasse: 100m<sup>2</sup>





---

## Costa del Sol, Atalaya

Large house ready to go in to live; From the beautiful front garden and through a stone staircase you access the entrance of the house open to a large living room with fireplace that has plenty of light all day as it is south orientation; on this floor there is also a separate kitchen, with small dining room, that gives the access garden, a guest toilet and a small extra room perfect for office, or for room to play, from which you pass to the private garage covered with The house is the Lomas de Monte Biarritz one of the most beautiful and well-kept urbanizations in the area; On the first floor there are 3 bedrooms, the master with en-suite bathroom, closet area and access to two terraces one of them huge solarium type; , the other two rooms also have fitted wardrobes and share another bathroom; the house has a more attic floor where a small room is located with a large terrace that enjoys wide views. The house has recently been completely renovated by architects; so this list to enter to live and by its orientation, has a lot of light all day; the community is very well maintained and managed. It has large and beautiful gardens and 2 swimming pools, one of adults and another of children; It is a perfect house for families with children, since there is a lot of atmosphere; and it is perfect for living all year round; since it is next to all services: The Guadalmina Shopping Centre also the Atalaya and San José schools in Guadalmina are next to it; Call us and we teach you!!



## Eigenschaften:

### Merkmale

Überdachte Terrasse  
In der Nähe des Transports  
Private Terrasse  
Marmorböden  
Doppelverglasung  
Einstellungsschränke  
Solarium  
Spielzimmer  
Versorgungsraum  
Holzböden

### Ansichten

Panorama  
Land  
Garten  
Pool

### Pool

Gemeinschaft

### Garten

Privater Garten

### Energiebewertung

C

### Orientierung

Süden

### Einstellung

In der Nähe von Golf  
In der Nähe des Hafens  
In der Nähe des Meeres  
In der Nähe von Geschäften  
In der Nähe der Stadt  
In der Nähe von Schulen

### Möbel

Nicht eingerichtet

### Sicherheit

Gated Complex  
Elektrische Jalousien

### CO2 -Emissionsbewertung

C

### Klimakontrolle

Kamin

### Zustand

Gut  
Exzellent  
Kürzlich renoviert  
Neubau

### Küche

Teilweise montiert

### Parken

Privat