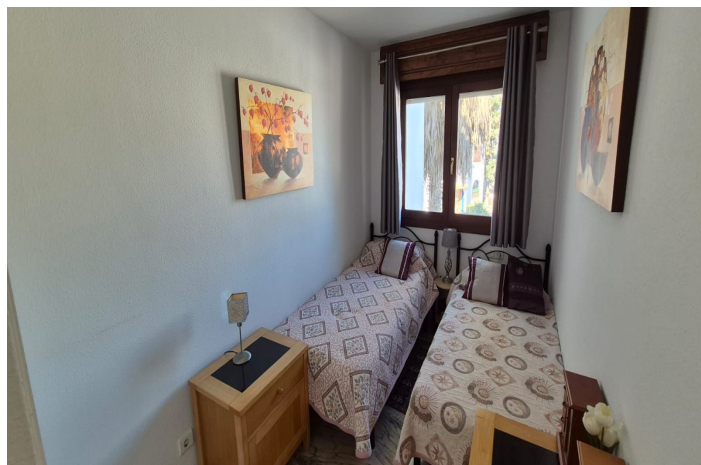
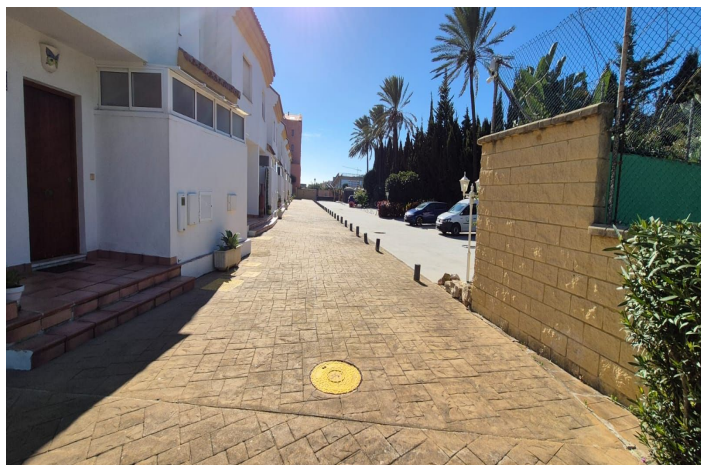




Townhouse for sale in Manilva, Manilva

510,000 €

Reference: R5274805 Bedrooms: 4 Bathrooms: 3 Plot Size: 50m² Build Size: 260m² Terrace: 100m²





Costa del Sol, Manilva

Spacious South-Facing Townhouse with Stunning Sea Views in La Borboleta, Manilva – Costa del Sol Indulge in coastal paradise with this impressive townhouse in the established urbanisation, a frontline beach community offering direct access to golden sands and the sparkling Mediterranean. Perfectly positioned for convenience, it's just a short stroll from vibrant La Duquesa Port and Marina, brimming with restaurants, shops, and leisure options, while being close to Sotogrande (10 minutes drive) and Estepona (15 minutes). This gated complex, built around lush gardens, features a large communal swimming pool, paddle/tennis courts, secure beach gates, and nearby amenities like a chiringuito beach bar and bus stop – ideal for a relaxed, family-friendly lifestyle. Spanning 260 m² built (180 m² usable) over three levels, the south-facing property is flooded with natural light and offers versatile accommodation. The entrance leads to a fully equipped kitchen, expansive living room with patio doors to a lower terrace, and access to a huge garage plus storage. Ascend to the middle floor with three bedrooms and a family bathroom, including a master suite with en-suite walk-in shower. The top floor hosts an additional bedroom opening to a terrace with breathtaking sea views. Eco-friendly solar panels reduce energy costs, complemented by air conditioning throughout. Priced at €515,000 – a rare opportunity for beachfront living with endless potential in this sought-after Costa del Sol gem!



Features:

Features

Covered Terrace
Near Transport
Private Terrace
Storage Room
Ensuite Bathroom
Marble Flooring
Double Glazing
Fitted Wardrobes
Solarium
WiFi
Gym
Utility Room
Fiber Optic

Setting

Commercial Area
Beachside
Urbanisation
Close To Shops
Close To Town
Close To Schools
Beachfront
Village
Front Line Beach Complex

Furniture

Optional

Security

Gated Complex
Entry Phone

Orientation

South

Condition

Excellent

Kitchen

Fully Fitted

Parking

Garage
Private
Covered
More Than One

Views

Sea
Panoramic
Garden
Pool
Beach
Port
Courtyard

Pool

Communal

Garden

Communal
Private Garden

Utilities

Photovoltaic solar panels