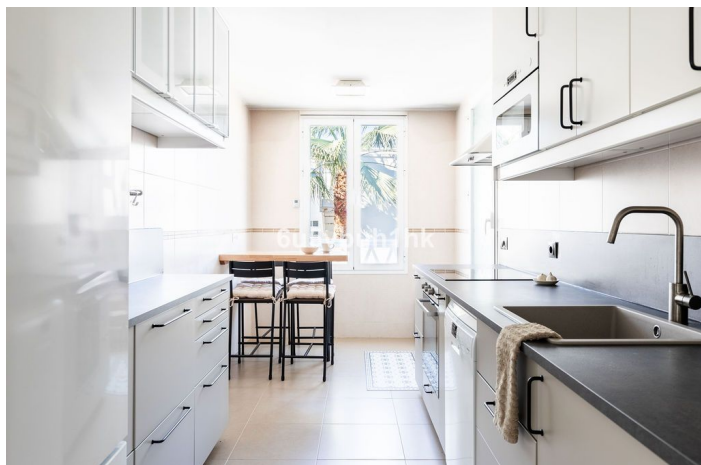
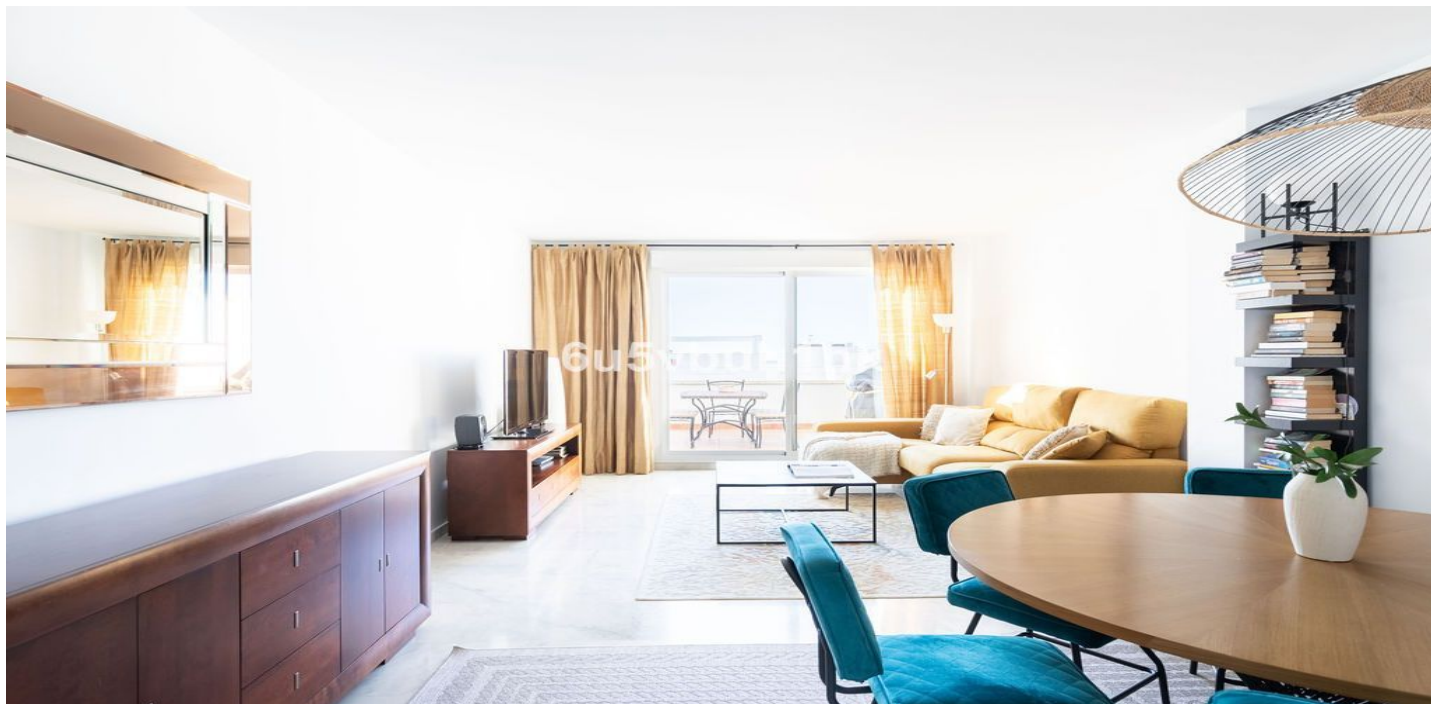




Penthouse for sale in Torrequebrada, Benalmádena

835.000 €

Referenz: R5272009 Schlafzimmer: 3 Badezimmer: 2 Grundstücksgröße: 146m² Garten: 146m² Terrasse: 121m²





Costa del Sol, Torrequebrada

Set in the prestigious Torrequebrada area of Benalmádena, this refined penthouse offers an exceptional combination of elegance, privacy and an unrivalled coastal lifestyle, just moments from the Mediterranean. The residence comprises three generously proportioned bedrooms, a bright and elegant living and dining area, a separate fully equipped kitchen, two stylish bathrooms and a dedicated utility room, all thoughtfully designed to combine comfort with timeless sophistication. Crowning the home is an extraordinary rooftop terrace, where the palm treetops frame the space beautifully, creating a unique atmosphere of serenity and exclusivity. With open sea views, this expansive terrace is designed for both relaxation and entertaining, featuring a dining area, sun loungers, barbecue, jacuzzi and a private Finnish sauna — a rare and luxurious feature on the Costa del Sol. The penthouse is located within an exclusive, gated and impeccably maintained urbanisation, considered one of the most desirable in the area. Perfectly positioned between the sea and the Torrequebrada golf course, with public transport conveniently nearby, the location offers both tranquility and effortless connectivity. While the home enjoys a peaceful and private setting, the vibrant lifestyle of the surrounding area is just a short walk away. Multiple beaches, the casino, supermarkets, fine dining restaurants and charming cafés are all within easy reach. Close enough to enjoy the energy of the coast, yet elevated and secluded enough to preserve complete privacy. The scent of the sea accompanies everyday living. Additional features include a private underground parking space and access to a beautiful communal swimming pool area. A truly rare penthouse that embodies refined coastal luxury — where palm treetops, sea views and absolute privacy meet.



Eigenschaften:

Merkmale

Überdachte Terrasse
Aufzug
In der Nähe des Transports
Private Terrasse
Badezimmer
Doppelverglasung
Einstellungsschränke
Sauna
Whirlpool

Ansichten

Meer
Berg
Panorama
Land
Garten

Pool

Gemeinschaft

Garten

Gemeinschaft

Orientierung

Süden

Einstellung

Strand
In der Nähe von Golf
In der Nähe von Geschäften
In der Nähe der Stadt
In der Nähe von Schulen

Möbel

Voll eingerichtet

Sicherheit

Gated Complex
24 -Stunden -Sicherheit

Klimakontrolle

Klimaanlage
Zentralheizung

Zustand

Exzellent

Küche

Voll ausgestattet

Parken

Unterirdisch
Gemeinschaft