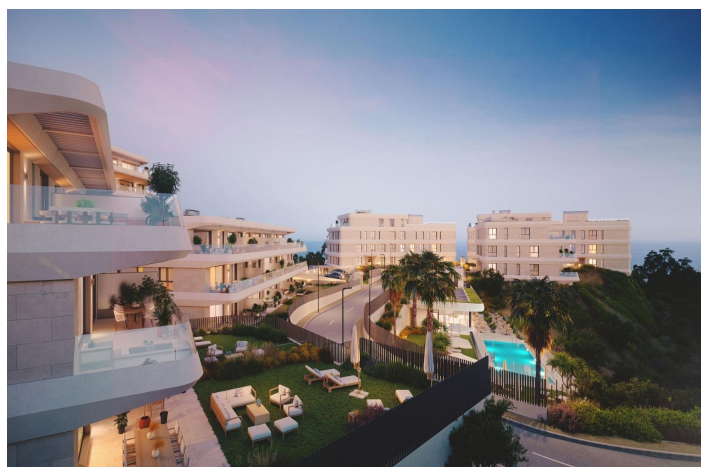
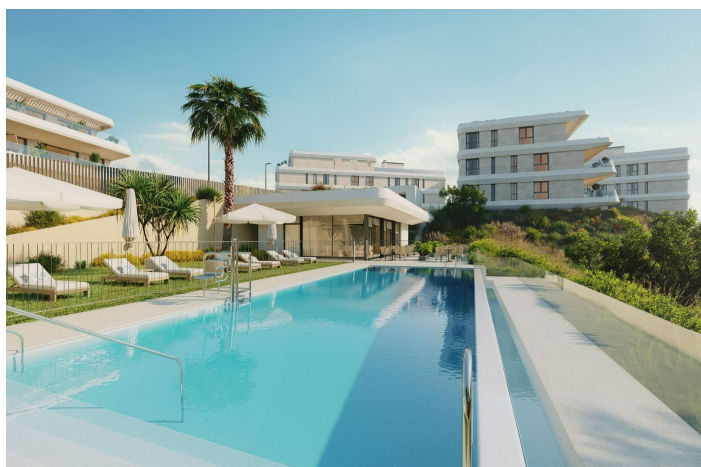




Apartment for sale in Estepona, Estepona

948,000 €

Reference: SP1445 Bedrooms: 4 Bathrooms: 3 Build Size: 213m² Terrace: 45m²





Costa del Sol, Estepona

Modern New Build Apartments in Selwo Estepona Near the Beach and Golf Exclusive Location in Selwo Estepona Discover this new residential development in the heart of Selwo, Estepona, next to La Resina Golf Club. Set in an elevated position overlooking the Selwo Aventura nature park, this boutique style community offers a peaceful environment surrounded by greenery and open views. Selwo is one of the most up and coming areas of Estepona, known for its natural landscapes, proximity to the coast and excellent connections. Estepona town center, with its charming old town, marina, restaurants and shops, is just a short drive away. Stylish Homes Designed for Comfort The development consists of 73 modern apartments with 2, 3 and 4 bedrooms, carefully designed for comfort and wellbeing. Located only 2 km from the beach, many homes enjoy beautiful sea views. Each property includes at least one private parking space and a storage room. The apartments feature fully equipped kitchens with appliances, aerothermal systems for hot water and underfloor heating, fully installed ducted air conditioning and electric blinds in the living room and bedrooms. Resort Style Communal Areas Residents can enjoy a wide range of high quality communal facilities. These include an adult swimming pool and a children's pool, spacious landscaped gardens, a multipurpose social room and a bicycle storage area. The exclusive Social Club offers a complete gym, saunas, a stylish gastro bar and garden areas, creating a perfect space to relax or socialize with family and friends. The entire complex is gated and features perimeter video surveillance for added security and peace of mind. Natural Surroundings Next to Selwo Aventura One of the most unique features of this development is its location next to Selwo Aventura, a renowned wildlife park home to more than 1,000 animals. This natural setting ensures open views, privacy and a strong connection to nature, while still being close to the coast and urban services. The development is just meters from the A7 road, providing excellent access to surrounding towns and key destinations. Distances to Points of Interest Beach 2 km La Resina Golf 1 km Estepona town center 7 km Puerto Banus 15 km Marbella 20 km Gibraltar Airport 40 km Malaga Airport 75 km Renfe train station Fuengirola 65 km Port of Estepona 8 km Your New Home on the Costa del Sol These new build apartments in Selwo Estepona combine modern design, natural surroundings and a prime location near the beach and golf. Contact us today to receive more information or arrange your private viewing.



Features:

Features	Energy Rating	CO2 Emission Rating
Gym	A	A
Number of Parking Spaces: 1		
Communal Pool		
Near Schools		
Location: Coastal, Urbanisation		
Terrace: 45 Msq.		
Gated		
Under-Build / Basement		
Near Commercial Center		
Beach: 2000 Meters		
Elevator/Lift		
Near Golf / Golf Resort Property		
First Line to the Sea		
Double Bedrooms: 4		
Near Bus Route		
Useable Build Space: 170 Msq.		