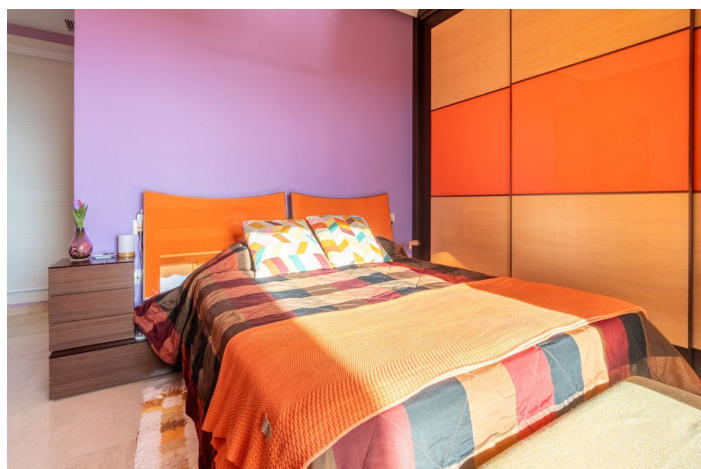




## Middle Floor Apartment for sale in Benalmádena, Benalmádena

420.000 €

Referenz: R5286973    Schlafzimmer: 2    Badezimmer: 2    Garten: 156m<sup>2</sup>





---

## Costa del Sol, Benalmádena

Apartment located in a well-established residential development next to Torrequebrada Golf, offering a comfortable and well-planned layout. The property features bright, generously sized living spaces, with the main living area opening directly onto an enclosed terrace fitted with glass curtains. From here, there are open views over the surrounding green areas and partial sea views in the distance. The interior is practical and well maintained, suitable for both permanent living and holiday use. The apartment comprises two bedrooms, two full bathrooms, built-in wardrobes and a fully equipped independent kitchen. The enclosed terrace adds valuable year-round living space, allowing natural light to flow through the home while providing a flexible area for dining or relaxation. The property includes a private parking space and forms part of a well-kept residential complex in a quiet setting. Situated in the Torrequebrada Golf area, one of Benalmádena's most established residential zones, the property is within easy reach of the beach, supermarkets, schools, sports facilities and the golf course itself. There is quick access to the A-7 motorway, providing convenient connections to Málaga city centre, Málaga International Airport and the rest of the Costa del Sol. A practical location combining residential surroundings with nearby services and good transport links. The Abbreviated Informative Document (DIA) is available upon request. Additional costs: taxes (ITP or VAT + AJD), notary and registry fees are not included in the price.



## Eigenschaften:

### Merkmale

Aufzug

In der Nähe des Transports

Private Terrasse

Marmorböden

Einstellungsschränke

Zugang für Menschen mit reduzierter

Mobilität

### Ansichten

Meer

Berg

Panorama

Golf

### Küche

Voll ausgestattet

### Kategorie

Golf

### Orientierung

Südwesten

### Einstellung

In der Nähe von Golf

Urbanisierung

In der Nähe der Stadt

### Parken

Garage

Privat

Bedeckt

### Energiebewertung

D

### Klimakontrolle

Klimaanlage

Zentralheizung

### Zustand

Exzellent

### Versorgungsunternehmen

Strom

### CO2 -Emissionsbewertung

D