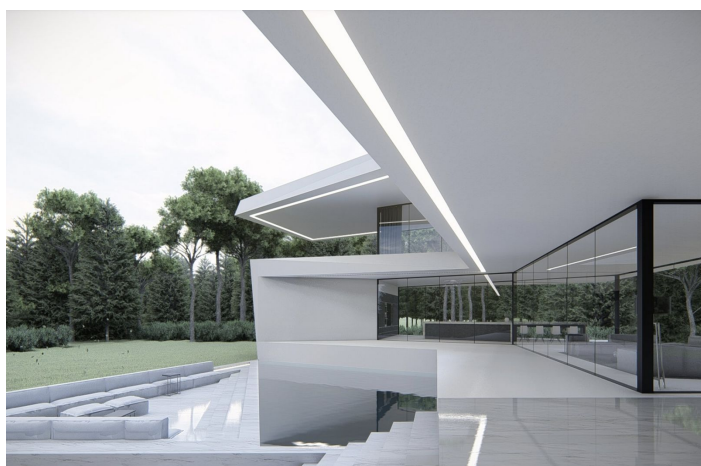
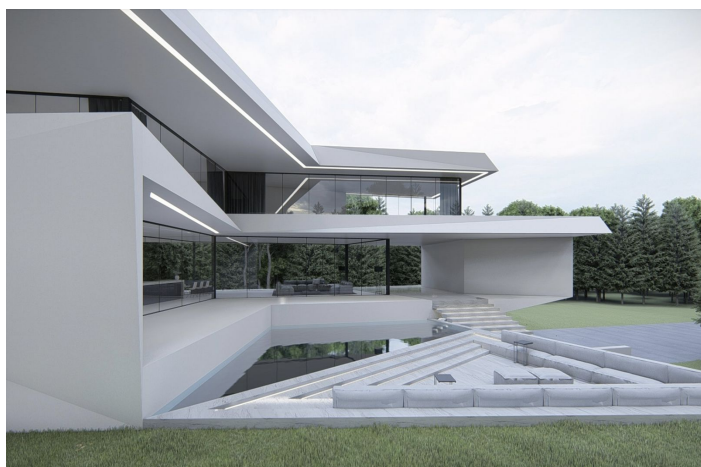




## Detached Villa for sale in Benahavís, Benahavís

**4,995,000 €**

Reference: R4629586 Bedrooms: 7 Bathrooms: 9 Plot Size: 5,000m<sup>2</sup> Build Size: 870m<sup>2</sup> Terrace: 560m<sup>2</sup>





## Costa del Sol, Benahavís

OFF PLAN – CONTEMPORARY ECOLOGICAL VILLA IN LA QUINTA, BENAHAIVIS IN URB. LOS ALMENDROS with panoramic views and views and on 6,5 km from the beach. The ground floor: entrance hall with lift, guest toilet, technical installations room, spacious living/dining room with large open plan fully fitted kitchen with Bosch appliances and separate pantry, furthermore there is on this floor a separate bedroom/study with en-suite bathroom, large, covered terraces overlooking the large 51,50 m2 heated swimming pool. On the first floor: lift, landing, master bedroom with master bathroom and large dressing room and of course a huge private terrace. A hallway leads you to another 3 bedrooms with 3 bathrooms wherefrom 1 ensuite and a terrace accessible for all 3 bedrooms. In the semi-basement, you have a huge carport with stairs with a path that leads you to the main entrance. Furthermore, the lift takes you to this floor where you find another bedroom with a bathroom ensuite, a separate apartment/bedroom and a games room. There is a completely separate flat which has a living/fitted kitchen/bedroom area, a dressing room and an ensuite bathroom. The separate flat is accessible from the garage but could also be accessed from the lift area. Construction time approx. 12 to 14 months after licenses. Pictures of bathrooms and kitchens are just examples of what they could look like, final choice will be that of the clients. Example of some of the specifications, - Interior and exterior floor tiles from GRESPANIA 600x600 - 800x800 - 1200x1200 (Color and size to choose) - Bathroom walls with COVERLAM plates (GRESPANIA) 2700X1200 (Color to choose) - Bathrooms from ROCA – VILLEROY BOCH – DURAVIT or similar - Aerothermia/airconditioning - Elevator from Schindler or similar - Underfloor heating in the full villa - Ceiling high windows with a sunken track, 5+5/chamber/6+6 - Ceiling high and 1-meter wide HPL interior doors, 30dB - Ceiling high pivot entrance door and 1,50 wide - Fully fitted kitchen with aluminum frame doors and covered with COVERLAM (Color to choose) - Island with COVERLAM 3600X1600 no visible joints (Colour to choose) - White goods from Bosch – AEG or MIELE - Heated pool with automatic cover - 20 solar panels - 3 lithium batteries of each 10kW - Car charger - Domotica We are a construction company, Key-in-Hand, that can design and construct any possibility you can think of. If you do not see a design of us that you like we design a totally new villa for you according to your ideas and input. Although we prefer to construct ecological building, we can construct from traditional construction to ecological constructions it all depends on you.



## Features:

### Features

Covered Terrace  
Lift  
Private Terrace  
Storage Room  
Ensuite Bathroom  
Double Glazing  
Fitted Wardrobes  
WiFi  
Tennis Court  
Guest Apartment  
Guest House  
Utility Room  
Jacuzzi  
Barbeque  
Domotics  
Basement  
Fiber Optic  
Access for people with reduced mobility

### Views

Mountain  
Panoramic  
Country  
Garden  
Pool  
Urban  
Street

### Pool

Heated  
Private Pool

### Garden

Private Garden  
Easy Maintenance

### Utilities

Electricity  
Drinkable Water  
Telephone  
Photovoltaic solar panels  
Solar water heating

### Orientation

East  
West  
South East  
South West

### Setting

Close To Golf  
Urbanisation  
Close To Shops  
Close To Town  
Close To Schools

### Furniture

Optional

### Security

Alarm System  
Entry Phone  
Safe

### Category

Holiday Homes  
Investment  
Golf  
Luxury  
Off Plan  
Contemporary

### Climate Control

Air Conditioning  
Cold A/C  
Hot A/C  
Fireplace  
U/F Heating  
U/F/H Bathrooms

### Condition

New Construction

### Kitchen

Fully Fitted

### Parking

Underground  
Garage  
Private  
Covered  
Open  
More Than One

