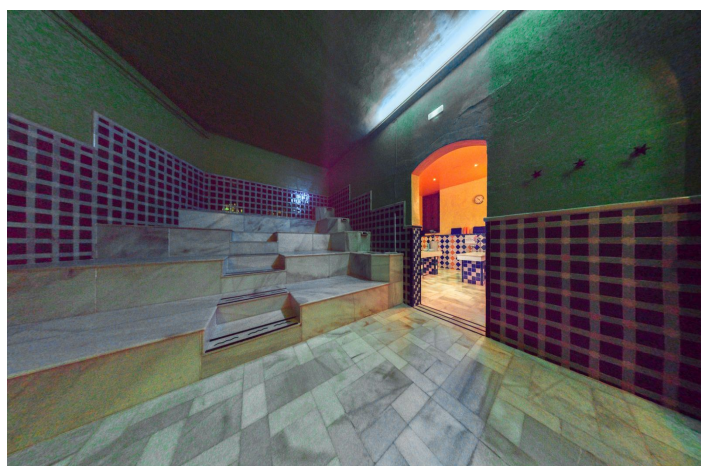
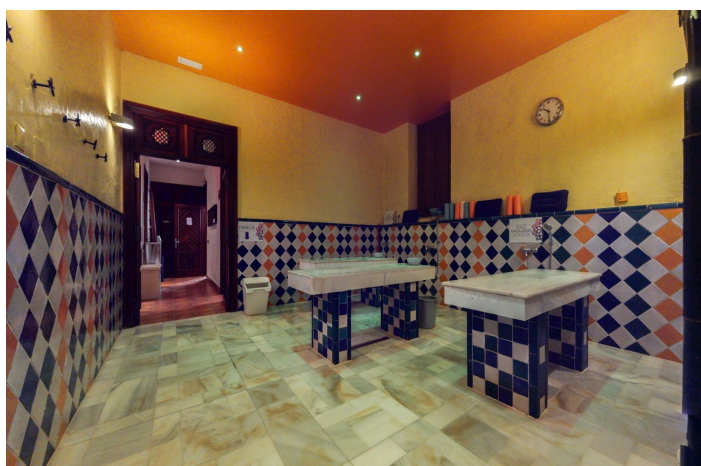
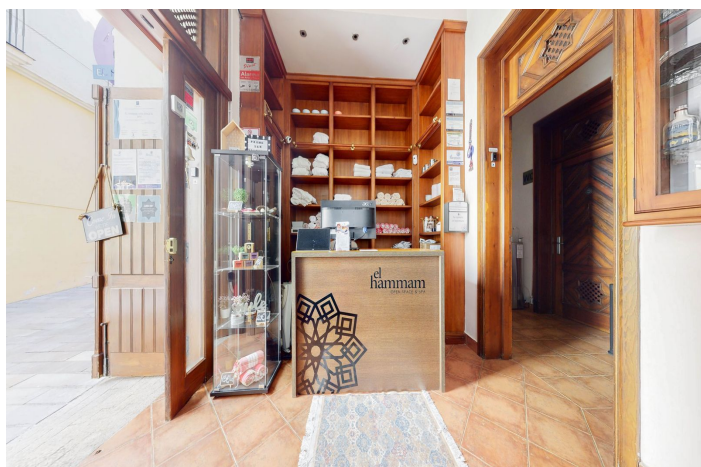




## Business for sale in Málaga, Málaga

**1,395,000 €**

Reference: R4249780    Bathrooms: 4    Plot Size: 179m<sup>2</sup>    Build Size: 308m<sup>2</sup>





---

## Costa del Sol, Málaga

Are you looking for a unique property in the centre of Málaga? We have the perfect building for sale, located in the heart of the city. With a surface area of approx. 500m<sup>2</sup> divided into 4 floors including the roof terrace and with the possibility of an extension up to 700m<sup>2</sup>, this impressive 18th century building, completely restored and refurbished, is now available for sale and comes with a very special feature - a Hamman. Located in the historic centre of Malaga, in the old Jewish quarter and within the circuit of the Picasso Museum, the Plaza de la Merced, the Cathedral, etc... the building itself is also a true masterpiece. With spacious marble hot rooms, reception, changing rooms, massage, Yoga and Pilates rooms, VIP lounge with bathroom and kitchen, high ceilings and plenty of natural light, it has been designed with comfort and style in mind. The modern and elegant finishes, combined with traditional elements, create a warm and welcoming atmosphere. There is also a large rooftop terrace with panoramic views of the city. The Hamman is a type of traditional steam bath common in many cultures, the perfect place to unwind and relax. With its warm atmosphere and soothing steam, you can relieve stress and rejuvenate your mind, body and soul. With all there is to see and do in the city of Malaga, whether you are looking to continue a successful business for over 20 years, or an investment property in one of the most sought after areas of Malaga, this building is the perfect opportunity for both residential and commercial purposes. Don't miss this unique opportunity to own such a special property, a piece of Malaga's history! Contact us to arrange a viewing and discover the endless possibilities that are waiting for you.



## Features:

### Features

Near Transport  
Private Terrace  
Storage Room  
Marble Flooring  
Solarium  
WiFi  
Wood Flooring  
Near Mosque  
Near Church  
Access for people with reduced mobility

### Setting

Commercial Area  
Close To Port  
Close To Shops  
Town  
Close To Marina

### Security

Alarm System  
Safe

### Energy Rating

G

### Orientation

South East

### Condition

Recently Refurbished  
Recently Renovated

### Utilities

Electricity  
Drinkable Water  
Telephone  
Solar water heating  
CO2 Emission Rating

G

### Views

Panoramic

### Furniture

Optional

### Category

Investment